



**Exam : MB7-221**

**Title : Navision 4.0 C/SIDE Introduction**

**Ver : 11.28.06**

---

**QUESTION 1:**

Which of the following is a valid Codeunit trigger?

- A. OnAfterGetRecord.
- B. OnPreDataItem.
- C. OnInitCodeunit.
- D. OnRun.

Answer: D

---

**QUESTION 2:**

The scope of a variable refers to the

- A. Range of values that can be assigned to the variable.
- B. Amount of data that a variable can store.
- C. Parts of the program in which the variable can be used.
- D. Length of time the variable can be used.

Answer: C

---

**QUESTION 3:**

Which of the following facilities provided by Navision will allow a Navision application to access data or functions in outside applications?

- A. C/OCX and OLE Automation.
- B. NODBC and C/FRONT.
- C. NODBC and C/OCX.
- D. C/OCX and C/APP.

Answer: A

---

**QUESTION 4:**

When setting up a Worksheet form used to display and enter journal entries, the AutoSplitKey property of the form must be set to Yes. What corresponding action must be performed on the form's Source Table to have those form entries correctly increment?

- A. Define the type of the last field of the primary key of the Source Table as a Line No.
- B. Define the type of the first field of the primary key of the Source Table as an Integer.
- C. Set the Permissions property of the Source Table to YES.
- D. Define the type of the last field of the primary key of the Source Table as an Integer.

Answer: D

---

**QUESTION 5:**

Which of the following statements is TRUE regarding grouping in Navision reports?

- A. There can multiple GroupHeader and multiple GroupFooter sections for each Data Item.
- B. There can only be one GroupHeader and one GroupFooter section for each Data Item.
- C. There can only be one GroupHeader, but multiple GroupFooter sections for each Data Item.
- D. There can be multiple GroupHeader, but only one GroupFooter section for each Data Item.

Answer: A

---

**QUESTION 6:**

A SumIndexField is a field that can be attached to a key definition. Which of the following are accurate characteristics of a SumIndexField?

- A. A SumIndexField can be any data type and can be attached to any key in the table.
- B. A SumIndexField can be any data type and can only be attached to the primary key.
- C. A SumIndexField must be a decimal field and can be attached to any key in the table.
- D. A SumIndexField must be a decimal field and can only be attached to the primary key.

Answer: C

---

**QUESTION 7:**

Which of the following is an invalid constant value for a variable (or field) of type text?

- A. "Wally Wallace".
- B. '12:30 AM'.
- C. ''.
- D. 'Wally Wallace'.

Answer: A

---

**QUESTION 8:**

Which of the following statements is true regarding C/AL programming?

- A. It can be found in object areas known as "events".

- B. It can be found in any Navision application object.
- C. It is based on the C# programming language.
- D. It requires that each line be identified by line number.

Answer: B

---

**QUESTION 9:**

Which of the following is NOT a true statement regarding reports in Navision?

- A. Reports can be non-printing.
- B. Reports must be bound to a single table.
- C. Report Data Items can be indented to designate hierarchy.
- D. A report can include a form that runs before the actual report begins execution.

Answer: B

---

**QUESTION 10:**

Select the item that represents characteristics of an OCX control when used with Navision.

- A. Can be placed on a form, like a TextBox control.
- B. A small, outside application that can read data from Navision.
- C. A small, outside application that you can call from within Navision.
- D. Allows Navision to use C/ODBC to read Microsoft Access?data files.

Answer: C

---

**QUESTION 11:**

Which two methods can be used to designate fields to be totaled in a Navision report?

- A. Set the TotalFields property or set the GroupTotalFields property.
- B. Set the TotalFields property or use the CurrReport.CREATETOTALS command.
- C. Set the GroupTotalFields property or use the CurrReport.CREATETOTALS command.
- D. Set the GroupTotalFields property or use the CurrReport.CREATEGROUPS command.

Answer: B

---

**QUESTION 12:**

The following code uses two variables: CodeNum which is a Code type, and

TextNum which is a Text type. Which of the following constants could be used in both places indicated in the following code, so that the message will be displayed:  
TextNum:= consyant; CodeNum := constant; IF CodeNum = TextNum THEN  
MESSAGE('This message is displayed');

- A. 'Abc123'.
- B. 'ABC123'.
- C. 'abc123'.
- D. ' ABC123 '.

Answer: B

---

**QUESTION 13:**

What two properties would you change to ensure that a button control on a form remains in the same relative position on the form if the form is resized?

- A. HorzGlue and VertGlue.
- B. XPos and Ypos.
- C. HorzDock and VertDock.
- D. HorzAlign and VertAlign.

Answer: A

---

**QUESTION 14:**

In the Dataport field designer, the list of source expressions should be in what order?

- A. Ordered by data type (integer, decimal, text, ...).
- B. Same order as the information in the File.
- C. Same order as the fields in the Table.
- D. Alphabetical order.

Answer: B

---

**QUESTION 15:**

What is the name of the designer used to customize a MenuSuite?

- A. Navigation Pane Designer.
- B. Menu Designer.
- C. Item Designer.
- D. Form Designer.

Answer: A

---

**QUESTION 16:**

Which of the following is not a logical operator?

- A. OR.
- B. NOT.
- C. MOD.
- D. AND.

Answer: C

---

**QUESTION 17:**

A table description contains the following:

- A. Data and Keys.
- B. Properties, Data, Fields, and Keys.
- C. Properties, Triggers, Fields, and Keys.
- D. Names, Fields, Keys, and Forms.

Answer: C

---

**QUESTION 18:**

Using standard navigation in Navision, pick the two options to open a new card from a list form.

- A. Pressing the F11 key or selecting the Card menu item.
- B. Pressing Shift+F5 or selecting the Card menu item.
- C. Pressing Shift+F5 or selecting the Navigate menu item.
- D. Pressing the F11 key or selecting the Navigate menu item.

Answer: B

---

**QUESTION 19:**

Assume that there are three Date type variables with the following values: Date1 is 5/3/01 Date2 is 4/28/01 Date3 is 5/12/01 What is the type and value of the following expression?  $\text{Date3} + (\text{Date2} - \text{Date1})$

- A. Type = Date, Value = 5/17/01.
- B. Type = Integer, Value = -5.
- C. Type = Date, Value = 5/7/01.
- D. Not a valid expression, since Dates cannot be added.

Answer: C

---

**QUESTION 20:**

A Checkbox control must be bound to a field or other expression of which data type?

- A. Boolean.
- B. Check.
- C. BLOB.
- D. Binary.

Answer: A

---

**QUESTION 21:**

Which Data Type would be best for storing alphanumeric characters in a table?

- A. Text.
- B. BLOB.
- C. Option.
- D. Integer.

Answer: A

---

**QUESTION 22:**

Which of the following would be a valid IF-THEN statement in C/AL?

- A. IF (Amount = 0) AND Taxable THEN  
TaxCredit:= TaxCredit + TaxAmount  
END IF;.
- B. IF (Amount = 0) AND Taxable THEN  
TaxCredit:= TaxCredit + TaxAmount;.
- C. IF (Amount = 0) AND Taxable THEN  
TaxCredit = TaxCredit + TaxAmount;.
- D. IF Amount = 0 AND Taxable THEN  
TaxCredit:= TaxCredit + TaxAmount;.

Answer: B

---

**QUESTION 23:**

Select from the following the Navision server platform option that allows users to access Navision data through ODBC:

- A. Both the SQL Server Option and the Navision Server Option.
- B. Visual Basic.
- C. SQL Server Option for Navision.
- D. Navision Server Option.

Answer: C

---

**QUESTION 24:**

Which of the following is NOT a valid flowfield type?

- A. Count.
- B. Sum.
- C. Validate.
- D. Lookup.

Answer: C

---

**QUESTION 25:**

A Binary Operator is an operator that

- A. Can be used to work twice in the same expression.
- B. Acts upon both the term before it and the term after it.
- C. Acts upon any term to convert it into a binary value.
- D. Serves two purposes.

Answer: B

---

**QUESTION 26:**

In a Function, when a parameter is specified as Var, it means:

- A. The parameter is passed by value rather than reference.
- B. The parameter is passed as a variant.
- C. The parameter is passed by reference rather than value.
- D. The parameter has variable lengths.

Answer: C

---

**QUESTION 27:**

Form A calls a function in a Single Instance Codeunit and populates a global text variable with the value 'Red'. Then, Form B calls the same function and populates the same text variable with the value 'Blue'. Which of the following would be TRUE



if Form A were to then call another function in the same Single Instance Codeunit, and retrieve the same global text variable?

- A. The value of the text variable would be 'Red'.
- B. A LOCKTABLE error would occur.
- C. The value of the text variable would be 'Blue'.
- D. The text variable would contain a null value.

Answer: C

---

**QUESTION 28:**

Which of the following is true regarding running Codeunits?

- A. Codeunits cannot be run.
- B. Codeunits can be run from the Object Designer.
- C. Codeunits can be run by executing the CODEUNITEXECUTE command.
- D. Codeunits can be run from the Codeunit Execution tool.

Answer: B

---

**QUESTION 29:**

What is the main purpose of a subform?

- A. To make a form that is reduced in size.
- B. To filter a subset of information on a form.
- C. To display information from another table on a form.
- D. To display information below a form.

Answer: C

---

**QUESTION 30:**

If you want to use a method in an OCX control, and find that it requires a parameter of type 'long', what C/SIDE data type should you use for that parameter?

- A. Integer.
- B. Text with length greater than 50.
- C. Long.
- D. Decimal.

Answer: A

---

**QUESTION 31:**

Some of the triggers below are executed when a Dataport is run to import a file. Choose the answer that includes the proper triggers that are executed, in the proper order.

- (1) OnPreDataport
- (2) OnInitDataport
- (3) OnPostDataport
- (4) OnPostDataItem
- (5) OnBeforeExportRecord
- (6) OnBeforeImportRecord
- (7) OnPreDataItem
- (8) OnAfterExportRecord
- (9) OnAfterImportRecord

- A. (2), (1), (7), (6), (8), (4), (3).
- B. (1), (2), (7), (6), (9), (4), (3).
- C. (7), (1), (6), (9), (3), (4).
- D. (2), (1), (7), (6), (9), (4), (3).

Answer: D

---

**QUESTION 32:**

An example of a Unary operator is

- A. +.
- B. \*.
- C. /.
- D. AND.

Answer: A

---

**QUESTION 33:**

Which of the following characteristics are NOT a result of table relationships?

- A. Perform Lookup in other tables.
- B. Validate data entries.
- C. Automatically propagate changes from one table to other tables.
- D. Optimize table records.

Answer: D

---

**QUESTION 34:**

FlowFilters and FlowFields differ from normal data fields in what way?

- A. The values of these fields cannot be displayed on a form, whereas normal data fields are displayed on a form.
- B. The values of these fields are not stored in the database, whereas normal data fields are stored in the database.
- C. The values of these fields are stored in the database, whereas normal data fields are not stored in the database.
- D. These fields are not different from normal fields in any way.

Answer: B

---

**QUESTION 35:**

The Autosave property on a DataItem in a Dataport tells the DataItem to automatically

- A. Save the file periodically during an export.
- B. Replace records that exist in the table during an import.
- C. Insert records during an import.
- D. Update the system table to show that new records have been added to the database.

Answer: C

---

**QUESTION 36:**

Which statement best describes how MenuSuite object changes are stored?

- A. Each change is stored as a complete list of MenuSuite menus and items and replaces the previous level.
- B. Only one MenuSuite level is stored which consists of all menu items.
- C. Changes are stored as the difference between the previous MenuSuite level and the current one.
- D. MenuSuite changes are not stored.

Answer: C

---

**QUESTION 37:**

Which of the following data types would be valid as a total field in a Navision report?

- A. Number.
- B. Decimal.
- C. Integer.

D. BigInteger.

Answer: B

---

**QUESTION 38:**

When is it possible to change the name of a field in a table?

- A. You can never change the name of a field in a table.
- B. You can always change the name of a field in a table.
- C. You must first delete the data from the field in all records in the table before changing the field name.
- D. You must first remove all references to the field in other tables, forms and reports.

Answer: B

---

**QUESTION 39:**

You have a Dataport with one DataItem. You will only be importing into this table, so you do not need to allow the user to set filters on the DataItem. You decide that you do not want the Tab for that DataItem to appear on the Request Form. There are no Request Filter Fields set. What else do you need to do to make the Tab for the DataItem disappear?

- A. Change the Request Filter Heading to 'None'.
- B. Set the DataItemTableView property so that the DataItem is sorted.
- C. The only way to remove the Tab is to remove the DataItem.
- D. Change AutoUpdate to False.

Answer: B

---

**QUESTION 40:**

A logical operator evaluates to

- A. A Boolean value.
- B. An expression.
- C. A string value.
- D. A constant value.

Answer: A

---

**QUESTION 41:**

Which command would you place in the OnPreSection trigger of a section in a Navision report to prevent the section from printing?

- A. ONREPORTPRINT(TRUE);
- B. CurrReport.SHOWOUTPUT(TRUE);
- C. CurrReport.SECTION(TRUE);
- D. SHOWREPORT;
- E. CurrReport.SHOWOUTPUT(FALSE);

Answer: E

Explanation:

CurrReport.SHOWOUTPUT(TRUE)

True is when you want to Print the Section.

False when you want not to Print the Section.

---

**QUESTION 42:**

The Navision Server creates a new database version

- A. When a write transaction is committed.
- B. Before it starts generating a report.
- C. When a read transaction is completed.
- D. At scheduled intervals.

Answer: A

---

**QUESTION 43:**

What is the fundamental business rule concerning posting for all Functional Areas in the Navision application?

- A. All transactions are entered by the user into the Ledger, then Posted to the Journal.
- B. All transactions are posted by the user directly into the Ledger, while the Journal is used to track user comments.
- C. All transactions are posted through the Journal into the Ledger.
- D. All transactions are posted through the Ledger into the Journal.

Answer: C

---

**QUESTION 44:**

Which of the following XMLPort TagName properties selects the field to be mapped to XML data?

- A. ReqFilterField.
- B. FieldName.

- C. XMLField.
- D. SourceField.

Answer: D

---

**QUESTION 45:**

When you want to control an automation server, you create a variable of type Automation and reference the Automation Server as the subtype of this variable. Which of the following is TRUE regarding Automation Servers that can be chosen as the subtype?

- A. The Automation Server must utilize the COM+ interface.
- B. The Automation Server must be loaded on the development machine.
- C. Only Microsoft Automation Servers are available.
- D. The Automation Server must only contain interface type classes.

Answer: B

---

**QUESTION 46:**

How many MenuSuite design levels exist?

- A. 300.
- B. Unlimited.
- C. 13.
- D. 3.

Answer: C

---

**QUESTION 47:**

Which of the following lines of code would be a proper way to access a Codeunit from another object?

- A. CODEUNIT.RUN(CODEUNIT::"MyCodeunit");
- B. DO CODEUNIT::"MyCodeunit";
- C. CODEUNIT.RUNMODAL(CODEUNIT::"MyCodeunit");
- D. RUN = CODEUNIT::"MyCodeunit";

Answer: A

---

**QUESTION 48:**

In the Navision application, which of these table types will have the most trigger code (within a single Functional Area)? In other words, which type of table usually

has the most business rules?

- A. Journal table.
- B. Master table.
- C. Ledger table.
- D. Supplemental table.

Answer: A

---

**QUESTION 49:**

Suppose you were printing Customer Ledger Entries indented beneath a Customer. If you run out of room on the page in the middle of a Customer's Entries, you want to make sure that the Customer Name, Contact and Phone Number are printed at the top of the next page before continuing to print the Entries for that Customer. Which Section type would you use to print this information?

- A. PageHeader.
- B. GroupHeader.
- C. TransHeader.
- D. Header.

Answer: C

---

**QUESTION 50:**

When is it possible to change a data type for a field in a table?

- A. When there is no data for the field in the table.
- B. When you have the field permission.
- C. You can always change the data type of a field in a table.
- D. You can never change the data type of a field in a table.

Answer: A

---

**QUESTION 51:**

Which of the following is NOT a form trigger?

- A. OnDisposeForm.
- B. OnActivateForm.
- C. OnOpenForm.
- D. OnQueryCloseForm.

Answer: A

---

**QUESTION 52:**

Which of the following statements is TRUE regarding the Request Options Form Designer?

- A. You use the Request Options Form Designer to design the Requests tab of the Request Form.
- B. The Request Options Form Designer does not exist.
- C. You use the Request Options Form Designer to design the Options tab of the Request Form.
- D. You use the Request Options Form Designer to design all of the tabs of the Request Form.

Answer: C

---

**QUESTION 53:**

Which of the following data item properties would be used to specify which field or fields a Navision report should group by.

- A. RequestFields.
- B. GroupByFields.
- C. GroupTotalFields.
- D. TotalFields.

Answer: C

---

**QUESTION 54:**

Which of the following is NOT a valid reason for using Automation in Navision?

- A. To provide a seamless interface to outside applications.
- B. To avoid the use of a session.
- C. To standardize certain operations by using well-known applications.
- D. To save development time.

Answer: B

---

**QUESTION 55:**

To bind a form to a table, which form property must be set to the table number?

- A. SourceTable.
- B. CalcFields.
- C. TableRelation.
- D. TableBoxID.



Answer: A

---

**QUESTION 56:**

Which of the following is TRUE regarding exporting of MenuSuite objects?

- A. MenuSuite objects cannot be exported.
- B. MenuSuite objects can be exported in either object (fob) or text (txt) format.
- C. MenuSuite objects can be exported in either menusuite (mns) or text (txt) format.
- D. MenuSuite objects can only be exported in text (txt) format.

Answer: B

---

**QUESTION 57:**

Select an item that represents an advantage of NODBC over C/Front for integrating with Navision data stored on the Navision Server.

- A. NODBC is faster than C/Front.
- B. NODBC instructions are easier to write than C/Front instructions.
- C. NODBC can calculate FlowField values. C/Front cannot.
- D. C/Front uses a client session. NODBC does not.

Answer: B

---

**QUESTION 58:**

Which of the following is not a valid component of a Dataport?

- A. Properties.
- B. Data Items.
- C. Sections.
- D. Triggers.

Answer: C

---

**QUESTION 59:**

Which property of a Label control must be set in order to display a value on the control?

- A. Textbox.
- B. Caption.
- C. SourceExpr.
- D. LabelName.

Answer: B

---

**QUESTION 60:**

Using Navision standards, a List Report is a report that contains a single Data Item that is the table being listed. Which of the following would be a TRUE statement regarding list reports?

- A. Only the Primary Key field and a descriptive field can be included in the report.
- B. Each column on the report contains a field from the table, and the data is printed from that table, not brought in or calculated from other tables.
- C. The report is limited to only 65,500 lines.
- D. Each field, other than the Primary Key fields, must be activated using the CALCFIELDS command prior to being included in the Body section of the report.

Answer: B

---

**QUESTION 61:**

For a report, you have set the LeftMargin Report property to 1000. Before printing the report, the user specifies 15mm as the left margin in the Page Setup window. What will the left margin be in the printed report?

- A. 10 mm.
- B. 25 mm.
- C. 15 mm.
- D. 5 mm.

Answer: C

---

**QUESTION 62:**

Which of the following is correct regarding Local Variables?

- A. Local variables are limited in scope to the function in which they are defined.
- B. Local variables are re-initialized after execution of a Codeunit has completed.
- C. Local variables can only be declared in local functions.
- D. Local variables can only be defined in Codeunits.

Answer: A

---

**QUESTION 63:**

Which data type would be used for a field that has a FieldClass property of FlowField and a CalcFormula Method of Sum ?

- A. Boolean.
- B. Date.
- C. Decimal.
- D. Integer.

Answer: C

---

**QUESTION 64:**

When can you use an expression as an argument when calling a function?

- A. When the function call is used as a term in an expression.
- B. When you pass the expression either by value or by reference.
- C. Only when you pass the expression by reference.
- D. Only when you pass the expression by value.

Answer: D

---

**QUESTION 65:**

What happens if you set the Editable property of a field in a table to 'No'?

- A. You will not be able to modify the field using C/AL code, but you can still modify it using a form.
- B. You will not be able to modify the field using a form, but you can still modify it using C/AL code.
- C. The field will not be modifiable, whether you use a form or C/AL code.
- D. The field will not be able to be used on forms.

Answer: B

---

**QUESTION 66:**

Which of the following Functional Areas has more than one Master Table?

- A. Inventory.
- B. Fixed Assets.
- C. Sales & Receivables.
- D. General Ledger.

Answer: B

---

**QUESTION 67:**

To determine the number of elements in an array named 'Grades', which of the following functions should you use?

- A. ARRAYLEN(Grades).
- B. IN(Grades).
- C. DIMENSION(Grades).
- D. ELEMENTS(Grades).

Answer: A

---

**QUESTION 68:**

Which of the following is NOT true regarding Menus and MenuSuites?

- A. A menu contains content for a specific departmental area.
- B. The MenuSuite is displayed in the Navigation Pane.
- C. Items can be added and removed from a MenuSuite object.
- D. Menus consist of Items, Groups, and Objects.

Answer: D

---

**QUESTION 69:**

How is the Primary Key designated in the Key Designer?

- A. It is the last key listed.
- B. By setting the Primary Key property to True.
- C. Using the button with the Key icon.
- D. It is the first key listed.

Answer: D

---

**QUESTION 70:**

Given that the Text variable 'City State ZIP' contains the value 'Duluth, GA 30096', which of the following expressions has the value 'GA'?

- A. 'City State ZIP'[9:10].
- B. COPYSTR('City State ZIP',9,10).
- C. SUBSTR('City State ZIP',9,2).
- D. COPYSTR('City State ZIP',9,2).

Answer: D

---

**QUESTION 71:**

Tables in the C/SIDE database system are unkeyed:

- A. Rarely.
- B. Never.
- C. Always.
- D. Sometimes.

Answer: B

---

**QUESTION 72:**

If there was a Navision report designed with two data items, Customer and Ship-to Address, with Ship-to Address indented under Customer, and if there were ten Customer records with two Ship-to Address records for each Customer, how many times would a footer section for the Ship-to Address print, if all of the customer records were printed.

- A. 1.
- B. 12.
- C. 10.
- D. 20.

Answer: C

---

**QUESTION 73:**

Which designer in a report object allows you to change the layout of the printed report?

- A. Section Designer.
- B. Print Diagram Designer.
- C. Area Designer.
- D. Request Form Designer.

Answer: A

---

**QUESTION 74:**

Which of the following report sections would be valid for displaying totals?

- A. Header.
- B. Body.
- C. GroupHeader.
- D. GroupFooter.

Answer: D

---

**QUESTION 75:**

An unbound control differs from a bound control in that, unlike bound controls, unbound controls \*\*\* MISSING \*\*\*

- A. can change positions on the form on which they are placed.
- B. don't have properties.
- C. are able to switch data types on the fly.
- D. are not related to a Table field.

Answer: D

---

**QUESTION 76:**

During a transaction, which of the following can you NOT do?

- A. Run a form modally.
- B. Run a codeunit.
- C. Display a MESSAGE.
- D. End the transaction with a COMMIT.

Answer: A

---

**QUESTION 77:**

Controls are added to a form in the form designer using which button?

- A. Control.
- B. Control Wizard.
- C. Textbox.
- D. Toolbox.

Answer: D

---

**QUESTION 78:**

If you want a variable that has been passed to a function to be changed while in the function you can:

- A. Pass it by Value.
- B. Pass it by Reference.
- C. Modify it in the function then use it as a return value.
- D. Make sure the function is within the same object.

Answer: B

---

**QUESTION 79:**

In a standard Navision Functional Area, describe the table relationship(s) between a Master table and the corresponding Ledger table?

- A. A field in the Master Table is table-related to the Ledger Table.
- B. The Master Table and the Ledger Table each have a field that is table-related to the other.
- C. The Ledger Table and the Master Table do not have any fields that are table-related to the other at all.
- D. A field in the Ledger Table is table-related to the Master Table.

Answer: D

---

**QUESTION 80:**

Which of the following is NOT a valid component of a XMLPort?

- A. Labels.
- B. Triggers.
- C. Properties.
- D. TagNames.

Answer: A

---

**QUESTION 81:**

Key Groups are used to:

- A. Define the group of reports that use a key in a table.
- B. Activate and deactivate a seldom used group of keys.
- C. Associate a group of keys with a report.
- D. Allow keys to have a group of fields containing more than one field.

Answer: B

---

**QUESTION 82:**

Which of the following is NOT a valid report Section Type in Navision?

- A. Header.
- B. TransFooter.
- C. Body.

D. Total.

Answer: D

---

**QUESTION 83:**

In the Object Designer, you must place a check mark in the Modified column

- A. Never, since the Object Designer checks this field automatically whenever an object is modified.
- B. Whenever you have just finished modifying an object.
- C. Never, since the Import Worksheet marks this field automatically whenever an object is imported.
- D. Whenever you are just about to modify an object.

Answer: A

---

**QUESTION 84:**

You have a Supplemental Table that holds Doohickeys and you want to display the table records in a spreadsheet like manner and allow them to be edited. Using Navision standards, what kind of form will be used with this table?

- A. List Form.
- B. Card Form.
- C. Worksheet Form.
- D. Tabular Form.

Answer: D

---

**QUESTION 85:**

Which of the following is NOT considered a report type, according to Navision standards?

- A. Status Report.
- B. Document Report.
- C. Transaction Report.
- D. Test Report.

Answer: A

---

**QUESTION 86:**

Before you decide to write to Navision from an outside application using NODBC, you must consider which of the following limitations of this integration tool?



- A. You cannot read and write during the same transaction using NODBC.
- B. You cannot set any FlowField values using NODBC.
- C. You cannot execute any C/AL code in any object using NODBC.
- D. Transaction processing and table locking do not work using NODBC.

Answer: C

---

**QUESTION 87:**

If you want to set up your system so that an outside application, for example Microsoft Excel, can read Navision data, your first step is to install the NODBC driver on your system. Your next step is to:

- A. Run Navision Attain, select Tools, Options, and set the Quick Find option to Yes.
- B. Run Microsoft Excel and select Data, Get External Data, New Database Query.
- C. Re-start your system.
- D. Run the Control Panel, select Administrative Tools, and select Data Sources (ODBC).

Answer: D

---

**QUESTION 88:**

In order for an outside application to access data within Navision Server using C/ODBC, what must it support?

- A. Microsoft's SQL Server.
- B. Microsoft Query.
- C. Navision Server.
- D. Microsoft's ODBC.

Answer: D

---

**QUESTION 89:**

Which of the following is NOT a valid Form Property?

- A. SourceTable.
- B. DataItem.
- C. DataCaptionFields.
- D. Name.

Answer: B

---

**QUESTION 90:**

Which of the following is correct regarding Local functions?

- A. Local functions can be called from any object.
- B. Local functions can only access local variables.
- C. Local functions can only be defined in Codeunits.
- D. Local functions are defined by setting the Local property.

Answer: D

---

**QUESTION 91:**

A Check Box control is a handy way of displaying which one of the following variable data types?

- A. Boolean.
- B. Decimal.
- C. Integer.
- D. Char.

Answer: A

---

**QUESTION 92:**

Which of the following would NOT be considered a Document Report, based on Navision standard report types?

- A. Customer Statement.
- B. Inventory Order Details.
- C. Purchase Order.
- D. Sales Invoice.

Answer: B

---

**QUESTION 93:**

You are importing data from an outside source into Navision using a dataport. The data is in variable format and each field is separated by an ampersand ("&") character. Which of the following actions should you perform to be able to import data using this dataport?

- A. Change the FieldDelimiter property to the ampersand ("&") character.
- B. Set the AlternateDelimiter property to TRUE.
- C. Change the FieldSeparator property to the ampersand ("&") character.
- D. Add code to separate the fields in the OnPreImport trigger.

Answer: C

**QUESTION 94:**

Which of the following would NOT be a valid name for a Function?

- A. UserIDSet.
- B. SetUserID.
- C. IDUser.
- D. UserID.

Answer: D

---

**QUESTION 95:**

Which of the following commands would be best to use in C/AL to return the ID of the current user?

- A. USER.
- B. SYSTEM.UID.
- C. UID.
- D. USERID.

Answer: D

---

**QUESTION 96:**

Which of the following controls cannot be contained in a subform?

- A. PictureBox.
- B. Tab Control.
- C. Tablebox.
- D. Subform.

Answer: D

---

**QUESTION 97:**

For many outside applications, it is necessary to set up the NODBC Options so that the Identifiers field is set to 'All Except Dot'. Once this option has been set, then the field Customer No. would appear in the outside application as:

- A. Customer No.
- B. Customer No.
- C. CustomerNo.

Answer: A

**QUESTION 98:**

A function contains the following statement: Exit(TRUE); This statement indicates that the function:

- A. Closes down the Navision client.
- B. Only executes if it returns a value.
- C. Returns a Boolean value.
- D. Will not accept a parameter which is TRUE.

Answer: C

---

**QUESTION 99:**

Which Data Type would be best for storing Yes or No values in a table?

- A. Text.
- B. Boolean.
- C. Integer.
- D. BLOB.

Answer: B

---

**QUESTION 100:**

Which of the following form types can NOT be created using the Form Wizard?

- A. Card-Type.
- B. Blank.
- C. Tabular-Type.
- D. Worksheet-Type.

Answer: D

---

**QUESTION 101:**

Which field in the XMLPort description would be used to identify which table a tag name is equivalent to?

- A. SourceType.
- B. TableName.
- C. TagType.
- D. TagName.

Answer: A

---

**QUESTION 102:**

You have a table that stores transactions regarding Widgets. The table's name is Widget Ledger Entry. Using Navision standards, what type of form is used to access this table?

- A. Card Form.
- B. Worksheet Form.
- C. Tabular Form.
- D. List Form.

Answer: D

---

**QUESTION 103:**

The Report Designer window is used to

- A. Choose the tables you would like to export.
- B. Design the data model for the report.
- C. Designate the fields that will be displayed on the sections.
- D. Design the sections that will print.

Answer: B

---

**QUESTION 104:**

The following are the steps involved in using an automation server from C/SIDE:

- I) Declare all other interfaces (classes).
  - II) Use the methods and properties of the automation server in your C/AL code.
  - III) Use the C/AL CREATE function.
  - IV) Declare the top-level interface (class).
- Chose the answer that lists the steps in the proper order of execution.

- A. IV, I, III, II.
- B. III, IV, I, II.
- C. I, II, III, IV.
- D. IV, III, II, I.

Answer: A

---

**QUESTION 105:**

Why would you set the permissions property on a report?

- A. You must use this property to prevent users from running the report.
- B. You must use this property to allow users to run the report.

- C. You must use this property if the report modifies a protected table.
- D. If your customer license does not include that report you must use this property to add it.

Answer: C

---

**QUESTION 106:**

Choose a REPEAT .. UNTIL loop instead of a WHILE .. DO loop when you:

- A. Want to see how many conditions are met in your test.
- B. Want to bypass your test given a set of conditions.
- C. Want to time the loop.
- D. Want the loop to process at least once.

Answer: D

---

**QUESTION 107:**

When setting up a List form used to display tabular data, which of the following form properties can be modified to prevent the user from changing the displayed entries?

- A. SaveValues.
- B. CalcFields.
- C. Editable.
- D. Description.

Answer: C

---

**QUESTION 108:**

Assuming that the EXIT command is the last line of a trigger, which of the following is NOT an valid C/AL command?

- A. EXIT;.
- B. EXIT(Amount);.
- C. EXIT= True;.
- D. EXIT.

Answer: C

---

**QUESTION 109:**

Which two properties on a Subform control could cause the data displayed to be filtered?

- A. SubFormView and SubFormFilter.
- B. SubFormView and SubFormLink.
- C. SubFormLink and SubFormRestrained.
- D. SubFormFilter and SubFormControl.

Answer: B

---

**QUESTION 110:**

Into which table are the Journal Entries made for the Sales & Receivables Functional Area?

- A. Gen. Journal Line.
- B. Cust. Journal Line.
- C. Receivables Journal Line.
- D. Cash Rec. Journal Line.

Answer: A

---

**QUESTION 111:**

Which property on a Subform control would determine the form to be displayed?

- A. SubFormID.
- B. SourceDataLink.
- C. FormID.
- D. SubFormLink.

Answer: A

---

**QUESTION 112:**

Which of the following is the best definition of a Codeunit?

- A. A container for C/AL code.
- B. A measurement of C/AL code.
- C. The editor for C/AL code.
- D. The container for all C/AL code.

Answer: A

---

**QUESTION 113:**

A Local Variable in C/AL is a variable that can be accessed:

- A. Throughout the current object only.
- B. From within a process server.
- C. Only from within the function in which it was declared.
- D. From a program in a local directory.

Answer: C

---

**QUESTION 114:**

You have a table in which the user makes journal entries. Using Navision standards, what type of form will be used with this table?

- A. Tabular Form.
- B. Worksheet Form.
- C. Card Form.
- D. List Form.

Answer: B

---

**QUESTION 115:**

Select the item that represents an advantage of C/Front over NODBC for integrating with Navision data stored on the Navision Server.

- A. C/Front is faster than NODBC.
- B. C/Front can calculate FlowField values. NODBC cannot.
- C. NODBC uses a client session. C/Front does not.
- D. C/Front instructions are easier to write than NODBC instructions.

Answer: A

---

**QUESTION 116:**

Which of the following form types can contain a Column Break when created by the Form Wizard?

- A. Tabular-Type.
- B. Worksheet-Type.
- C. Blank.
- D. Card-Type.

Answer: D

---

**QUESTION 117:**

Which of the following form types can be created with tabs using the Form Wizard?



- A. Card-Type.
- B. Tabular-Type.
- C. Blank.
- D. Worksheet-Type.

Answer: A

---

**QUESTION 118:**

You are designing a report that is going to be run while other users are inserting records into the same transaction tables. Using version-based Navision Server, what do you need to do to the report to make sure that the data reported will be a consistent snapshot of the data in those transaction tables?

- A. You do not need to do anything. Because of the version-based nature of Navision Server, all reports print a consistent snapshot of the data.
- B. You will need to set the TransactionType property of the report to 'Browse'. This way, other users' entries will not be taken into account while the report is printing.
- C. You will need to set the TransactionType property of the report to 'Snapshot'. This way, users who attempt to make entries will be locked out while the report is printing.
- D. There is nothing you can do. The user will just have to tell all the other users not to make any entries while he or she is printing this report.

Answer: A

---

**QUESTION 119:**

In the Customer table, the Comment field is a FlowField and the CalcFormula property is the following:  
Exist('Comment Line' WHERE (TableName=CONST(Customer),No.=FIELD(No.)))  
Select the item that represents the data type of the Comment field.

- A. Boolean.
- B. Binary.
- C. Decimal.
- D. Integer.

Answer: A

---

**QUESTION 120:**

Which property of a Textbox control must be set to bind the control to a field or other data element?

- A. BindingControl.
- B. AutoEnter.
- C. Text.
- D. SourceExpr.

Answer: D

---

**QUESTION 121:**

A FOR loop:

- A. Steps through the loop a specified number of seconds.
- B. Checks for its condition at the bottom of the loop.
- C. Steps through the loop a specified number of times.
- D. Tests until the condition it is looking for is True.

Answer: C

---

**QUESTION 122:**

When called, the C/AL function ERROR displays an error message on the screen. What else does this function do?

- A. Since this message is used only in extremely critical situations, it unloads the Navision Client, and returns the user to the operating system.
- B. It automatically starts the entire process again without the user having to provide any additional input.
- C. It prompts to determine if the user wants to continue or exit.
- D. It terminates execution of C/AL code and returns the user to the point where the process began.

Answer: D

---

**QUESTION 123:**

Which are the valid "parts" of a table in Microsoft?Business Solutions-Navision?

- A. Data and Properties.
- B. Data and Description.
- C. Source and Description.
- D. Data and Legs.

Answer: B

---

**QUESTION 124:**

Which of the following IF statements is invalid and would cause a compilation error to occur?

- A. IF A = B THEN  
A := B + 1  
ELSE  
IF A = C THEN  
A := B + (C \* 2)  
ELSE  
A := B;  
B. IF A = B THEN  
A := B + 1  
ELSE  
IF A = C THEN BEGIN  
A := B;  
B := C + 1;  
END ELSE  
A := C + 1;.  
C. IF A = B THEN BEGIN  
A := B + 1;  
B := C + 1;  
END ELSE  
IF A = C THEN  
A := B + (C \* 2);  
ELSE  
A := B;.  
D. IF A = B THEN BEGIN  
A := B + (C \* 2);  
B := C + 1;  
END ELSE BEGIN  
A := B;  
B := C + 1;  
END;.

Answer: C

---

**QUESTION 125:**

Which Data Type would be best for storing alphanumeric characters as uppercase in a table, especially for use as a primary key field?

- A. Option.
- B. Text.
- C. Code.
- D. Integer.

Answer: C

---

**QUESTION 126:**

Which of the following controls would you add to a form to display a subform?

- A. Tab Control.
- B. Subform.
- C. PictureBox.
- D. Tablebox.

Answer: B

---

**QUESTION 127:**

A Global Variable in C/AL is a variable that can be accessed:

- A. Only from within the function in which it was declared.
- B. From any object in the database.
- C. Throughout the current object only.
- D. From an out of process server.

Answer: C

---

**QUESTION 128:**

Which XMLPort TagName property will cause flowfields to be calculated automatically?

- A. FlowCalc.
- B. CalcFields.
- C. DoCalcs.
- D. CalcFlow.

Answer: B

---

**QUESTION 129:**

Which of the following commands would be best to use in C/AL to change a closing date to a normal date?

- A. WORKDATE.
- B. COMPRESSDATE.
- C. NORMALDATE.
- D. NORMALIZEDATE.

Answer: C

---

**QUESTION 130:**

Which of the following triggers would you use to change properties of a form after it has been initialized and run?

- A. OnFormProperty.
- B. OnInit.
- C. OnFormat.
- D. OnOpenForm.

Answer: D

---

**QUESTION 131:**

Which of the following is NOT a valid report component?

- A. Section.
- B. Table Form.
- C. Control.
- D. Data Item.

Answer: B

---

**QUESTION 132:**

A relational operator evaluates to

- A. A constant value.
- B. A Boolean value.
- C. An expression.
- D. A string value.

Answer: B

---

**QUESTION 133:**

Which of the following values designates the first option in the OptionString property of a variable that has the Option data type?

- A. 1.
- B. 0.
- C. i.
- D. a.

Answer: B

---

**QUESTION 134:**

Using Navision standards, which one of these Form Types has tabs?

- A. Card.
- B. Tabular.
- C. Matrix.
- D. Worksheet.

Answer: A

---

**QUESTION 135:**

What is the Master Table for the Sales & Receivables Functional Area in Navision Attain?

- A. Vendor.
- B. Sales and Receivables Setup.
- C. Customer.
- D. Salesperson.

Answer: C

---

**QUESTION 136:**

What are the two distinct tasks involved in designing a Dataport?

- A. Creating the External File and importing the Data Items.
- B. Compiling the External File and designing the Data Model.
- C. Designing the Data Model and defining the External File.
- D. Designing the Buffer Table and compiling the External File.

Answer: C

---

**QUESTION 137:**

Which of the following is NOT a valid statement regarding Codeunits?

- A. Other objects can be run from Codeunits.

- B. Codeunits can be run from other Codeunits.
- C. Local Codeunits can only be run from other Codeunits.
- D. Codeunits can be run from other objects.

Answer: C

---

**QUESTION 138:**

Which of the following best describes Tab Controls?

- A. Tab controls can contain multiple tabs, the names of which are specified using the MultipleTab property.
- B. Tab controls can contain multiple tabs, the names of which are specified using the PageNames property.
- C. Tab controls must contain a tab named General. Any additional names are specified using the NewTabNameproperty.
- D. Tab controls can only contain one tab, named General.

Answer: B

---

**QUESTION 139:**

Which of the following is true of table binding regarding forms created with the Forms Wizard?

- A. Some forms can be bound to a table.
- B. Forms are never bound to a table.
- C. Some forms can be bound to multiple tables.
- D. All forms must be bound to a table.

Answer: A

---

**QUESTION 140:**

In a Navision report, which section property would you set to Yes, to ensure that a header section prints on every page of the report?

- A. PrintAll.
- B. KeepWithAllPages.
- C. AllPagePrint.
- D. PrintOnEveryPage.

Answer: D

---

**QUESTION 141:**

A key can have at most, how many SumIndexFields?

- A. 20.
- B. 200.
- C. 2.
- D. 1.

Answer: A

---

**QUESTION 142:**

Which of the following is NOT a characteristic of a MenuSuite object?

- A. It consists of a set of menus.
- B. A menu group contains a collection of menu nodes.
- C. A menu item is the highest level in the tree.
- D. A menu node can be either a menu group or a menu item.

Answer: C

---

**QUESTION 143:**

Which of the following is a TRUE statement regarding XMLPorts?

- A. XMLPorts can be run from the Object Designer.
- B. XMLPorts are only valid for UTF16 character encoding.
- C. XMLPorts will produce paper output.
- D. XMLPorts do not handle XML documents that find and delete data in the database.

Answer: D

---

**QUESTION 144:**

From a designer, which two methods can be used to access the C/AL Editor?

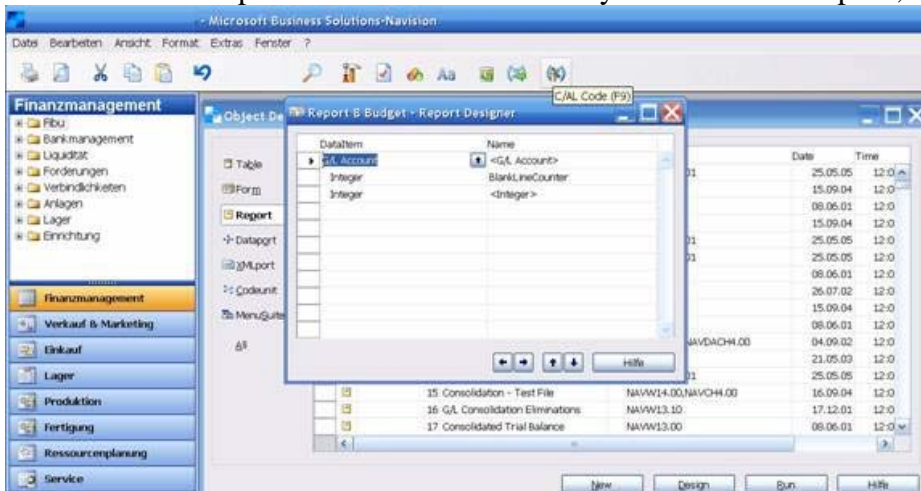
- A. Press the F9 key or click the C/AL button on the toolbar.
- B. Press the F11 key or select the Toolbox button on the toolbar.
- C. Press the F9 key or select the Toolbox button on the toolbar.
- D. Press the F11 key or select the C/AL button on the toolbar.

Answer: A

Explanation:



Go with the Mouspointer to C/AL Button and you will see the Tip F9, Screenshot below:



Not B, D: F11 is for compile the object!

---

### **QUESTION 145:**

What is the Master Table for the Cash Management Functional Area in Navision Attain?

- A. Customer.
- B. G/L Account.
- C. Bank Account.
- D. Cash Account.

Answer: C

---

### **QUESTION 146:**

A CASE Statement is used to:

- A. Compare one value to many others at once.
- B. Change text or code values to all upper case.
- C. Collect dissimilar conditions.
- D. Create an event trigger.

Answer: A

---

### **QUESTION 147:**

A Command Button is a form control that can be used for many purposes, including the launching of another form or program. What Command Button control property would be used to make the system immediately perform the action you specify?

- A. RunCommand.
- B. OnPush.
- C. UpdateOnAction.
- D. PushAction.

Answer: D

---

**QUESTION 148:**

How do you run a MenuSuite from the Object Designer?

- A. Click the Run button.
- B. MenuSuites cannot be run from the Object Designer.
- C. Select Tools | Navigation Panel | Run.
- D. Double-click the MenuSuites button.

Answer: B

---

**QUESTION 149:**

Which of the following would NOT be a valid reason to apply Grouping in a Navision report?

- A. To cause the report to print a sub-heading each time the Salesperson code changes when printing a list of Customers.
- B. To print a subtotal of the Balance field for each Salesperson when printing a list of Customers.
- C. To cause the report to print a new page for each Salesperson when printing a list of Customers.
- D. To cause two or more Customer reports to print simultaneously for each Salesperson.

Answer: D

---

**QUESTION 150:**

In a Navision report with Customer and Cust.Ledger Entry as data items and Cust. Ledger Entry indented under Customer, which of the following would be the easiest way to filter both tables to the same date range?

- A. Use the SETFILTER command on both tables in the OnPreDataItem trigger of the Customer data item.
- B. Add Date Filter to the ReqFilterFields property of the Customer data item and link the Posting Date field of the Cust. Ledger Entry data item to the Date Filter field of the Customer table, using the

DataItemLinkproperty.

C. Use the SETRANGE command on both tables in the OnPreReport trigger of the report.

D. Add Date Filter to the ReqFilterFields property of the Customer data item and use the SETFILTER command to filter the Posting Date field of the Cust. Ledger Entry table.

Answer: B

---

**QUESTION 151:**

Which of the following is NOT true of updating data in Navision using NODBC?

A. Data will be checked for conformance to Navision data types.

B. A Microsoft RAISEERROR will be generated for invalid data.

C. Additional fields normally populated in the OnValidate trigger of a field will have to be manually populated.

D. Data entered through NODBC will not be validated.

Answer: B

---

**QUESTION 152:**

What form control is used to display many records from a database at the same time?

A. Text Box.

B. Label.

C. Tab.

D. Table Box.

Answer: D

---

**QUESTION 153:**

Which of the following is NOT a valid form control?

A. DataBox.

B. TextBox.

C. TableBox.

D. PictureBox.

Answer: A

---

**QUESTION 154:**

Suppose the valid values of a field are Beginners, Intermediate and Advanced. This field can contain only these three values and can contain no others. What data type would best be used for this field?

- A. Text.
- B. Option.
- C. Code.
- D. Integer.

Answer: B

---

**QUESTION 155:**

Which of the following is NOT true regarding the XML TagName field?

- A. Attributes are entered prior to the elements they define.
- B. Parent elements must precede their child elements.
- C. Child elements are indented.
- D. Tag names must be entered in order.

Answer: D

---

**QUESTION 156:**

The main limitation of dataports as a tool to integrate Navision with an outside application, is that it requires the outside application to:

- A. Be certified as 'Navision Compliant'.
- B. Initiate all data transfers from itself to Navision by running the dataport.
- C. Know the internal data structure of the Navision tables to be updated by the dataport.
- D. Place its data into an ASCII file before the Navision dataport can read it.

Answer: D

---

**QUESTION 157:**

The IF statement evaluates and tests a condition to determine what code executes next. What is the expression type of that condition?

- A. Comparative.
- B. String.
- C. Numeric.
- D. Boolean.

Answer: D

---

**QUESTION 158:**

You must insert a field in a tabular form in a way that prevents users from accessing it until they select it using the View, Show Column menu bar option. To achieve this, you would insert the field normally and then change what property to No?

- A. Editable.
- B. Visible.
- C. Enabled.
- D. Focusable.

Answer: B

---

**QUESTION 159:**

A table in Navision can contain how many keys?

- A. 4.
- B. 40.
- C. 1.
- D. 400.

Answer: B

---

**QUESTION 160:**

Which of the following commands would be best to use in C/AL to cause a process to stop until the user selects Yes or No?

- A. CONFIRM.
- B. DIALOG.
- C. ERROR.
- D. MESSAGE.

Answer: A

---

**QUESTION 161:**

When creating a table relation, which characteristic must be true of the table specified by the table ID?

- A. The primary key must be a code data type.

- B. The table must not contain any records.
- C. The table must be a master table.
- D. The field ID specified must be part of the primary key.

Answer: D

---

**QUESTION 162:**

Assuming a decimal array named SalesAmount has been declared as a global variable, which command below would return the total number of elements in the array?

- A. ARRAYLEN(SalesAmount);.
- B. COPYARRAY(SalesAmount);.
- C. ELEMENRNUM(SalesAmount);.
- D. STRLEN(SalesAmount);.

Answer: A

---

**QUESTION 163:**

Suppose a field's value is always a whole number and will never be greater than 100,000. What data type would best be used for this field?

- A. Integer.
- B. Code.
- C. Option.
- D. Long Integer.

Answer: A

---

**QUESTION 164:**

Which of the following data types would NOT automatically be converted during an assignment?

- A. Integer to Decimal.
- B. Integer to Option.
- C. BLOB to Binary.
- D. Code to Text.

Answer: C

---

**QUESTION 165:**

Which two values must be defined when saving a table?

- A. ID and Compiled.
- B. Name and Source.
- C. ID and Size.
- D. ID and Name.

Answer: D

---

**QUESTION 166:**

Which of the following is NOT a property entered for a menu item of a Menu Suite?

- A. Object ID.
- B. Object Type.
- C. Name.
- D. Caption.

Answer: C